

CLARK

TMX

15S/15/17/20/25



Max Load Capacity
3000 / 3000 / 3500 / 4000 / 5000 lbs.
(1500 / 1500 / 1750 / 1815 / 2270 kg)

CLARK



- The low overhead guard height, only 83" facilitates **easier trailer access** while providing the operator ample headroom.

- Nested Upright Rails & Overhead Guard Safety Bars (running parallel to operator's line of sight) expand the vision window, **reduce product damage** and decrease pick times.

- The **low step height** means frequent entry and exit is easy and less tiring for the operator.

Standard Equipment

- Electric horn
- Overhead guard with 2 rear posts
- High visibility, durable capacity plate instructions/warning labels
- Rip-resistant operator manual is attached to back of seat
- Single auxiliary hydraulic valve
- 48 in. (1220 mm) high load backrest
- High visibility CLARK green finish with non-glare black trim

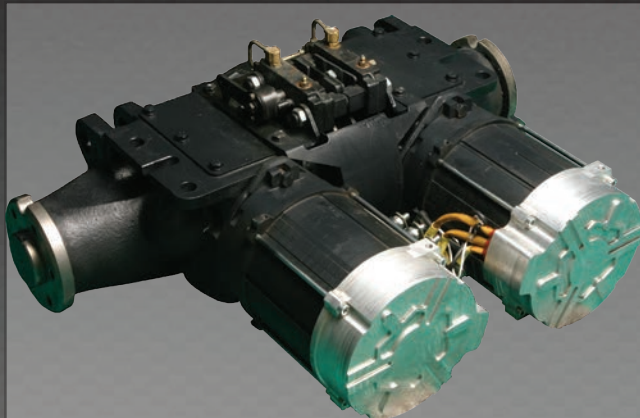
Available Equipment

- Mirrors
- 48 volt option
- Dual steer tires
- Operating lights
- Strobes and audible alarms
- Unitrol, foot operated directional control
- Cold storage protection
- UL type EE construction
- Overhead guard for drive-in type rack

Highly Maneuverable, Easily Serviceable, Broadly Flexible, Extremely Dependable



The TMX continues the evolution of CLARK's exclusive three-wheel design with the efficiency, low maintenance and power of a 100% AC System. This rugged yet comfortable design delivers superior capacities and the quality, dependability and maneuverability you've come to expect from CLARK – the inventor of the three-wheel forklift.



PROVEN DRIVE AXLE

■ Quiet, Dependable Operation

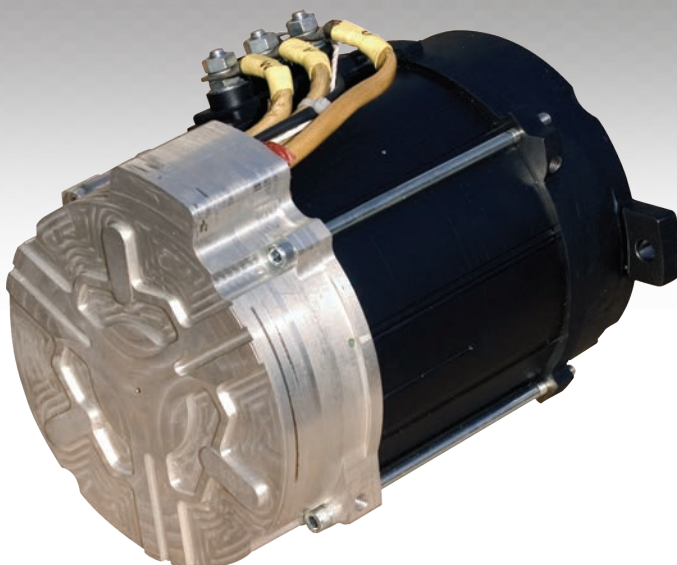
- Drive axle incorporates spiral bevel and helical gear sets.
- Design has over 20 million field hours in heavy duty applications.



PROVEN STEER AXLE

■ Added Strength

- The standard single-tire steer axle and an optional dual-tire steer axle are made from high strength cast steel and heat treated for additional strength.



100% AC SYSTEM

■ Fewer Parts & Minimum Wear = Less Downtime and Cost = Higher ROI

- Enclosed • Brushless • Thermal protection
- Stall protection • Smart lift lock out
- One motor for both steering & hydraulics.

■ No Brushes To Change or Commutator to Turn...Ever

■ Heavy-Duty, High Torque Drive Motors

- Produce twice the draw bar pull of some competitors.
- Climb grades previously limited to IC trucks.

■ Increased Runtime

- The standard compartment of the TMX15/17/20/25 accommodates a 1240 AH battery with an optional compartment available for a full 1550 AH battery.
- TMX AC runs 13% longer than its DC equivalent.



FULLY ADJUSTABLE/PROGRAMMABLE

- A properly trained mechanic can completely customize parameters to operator's preference such as acceleration rate, deceleration rate, maximum speed (separate forward and reverse).

& Don't Forget... Safety Starts With You!

Before operating a lift truck, an operator must:

- Be trained and authorized
- Read and understand operator's manual
- Not operate a faulty lift truck
- Not repair a lift truck unless trained and authorized
- Have the overhead guard and load backrest extension in place
- Perform daily inspections

During operation, a lift truck operator must:

- Wear a seat belt
- Keep entire body inside truck cab
- Never carry passengers or lift people
- Keep truck away from people and obstructions
- Travel with lift mechanism as low as possible and tilted back
- Allow safe stopping distance and come to a complete stop before leaving operator compartment

TMX STANDARD FEATURES & BENEFITS



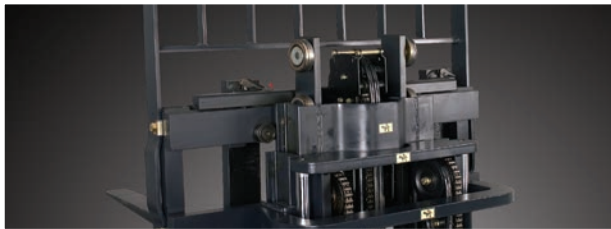
STANDARD HYDRAULIC PUMP CONTROL

■ Fully Proportional

- Lift speed is fully proportional to lift lever position.

■ Programmable Speeds

- Tilt and aux functions run at programmable fixed speeds.



RUGGED UPRIGHT AND CARRIAGE

■ Maximum Visibility

- Nested I-Channel allows space for cylinders, hoses and chains.

■ Hydraulic Cushioning Valves

- Silent staging reduces shock & vibration.

■ Shimmable, Sealed & Canted Load Rollers

- Carriage has 6 load rollers.
- Maximize load distribution & reduce free play.



TRACTION CONTROL

■ Fully Programmable

- Up to 20 performance parameter settings such as acceleration, creep speed, and regen braking rate can be adjusted to meet your requirements.

■ Speed Limiting

- Maximum travel speed can be programmed to your requirements and if necessary, forward and reverse can be set independently.

■ Controlled Descent

- When the controller senses movement but no accelerator pedal input, it signals the drive motors to apply counter torque allowing the truck to slowly descend an incline in a controlled manner.

■ Ramp Start

- Added torque limits roll back when starting on an incline.



OPERATOR COMPARTMENT

■ Easy Entry/Exit

- Steel grab handle and a low step height allow for easy entry/exit from either side.

■ Fully Adjustable Seat

- 2.4" Vertical travel • 20° Backrest adjustment range
- 6" fore / aft adjustment • Contoured for support
- Non-cinching, retractable seat belt

■ Cowl Mounted Hydraulic Controls

- Located and sized for ease of use.

■ High Pivot Steer Column

- Prevents interfering with operator's knees.

GENERAL DATA & STANDARD DIMENSIONS

Upright Table

Maximum Fork Height in mm	Overall Height Lowered in mm	Free Lift** in mm
TMX 15S/15/17/20 Standard		
100 2540	72.5 1842	4.3 109
110 2794	77.5 1969	4.3 109
• 121 3073	83 2108	4.3 109
129 3277	87 2210	4.3 109
143 3632	94 2388	4.3 109
Hi-Lo		
115 2921	77.5 1969	53 1346
• 126 3200	83 2108	59 1500
150 3810	95.5 2425	71 1803
Triple Stage		
156 3971	72.5 1840	48 1219
171 4346	77.5 1965	53 1355
• 188 4781	83 2110	59 1500
204 5184	89 2260	65 1650
219 5565	95.5 2420	71 1803
237 6017	103 2609	78 2004
Quad†		
222.5 5652	78.5 1994	53 1346
• 240.5 6109	83 2108	57 1448
258.5 6566	89 2261	63 1600
270.5 6871	93.5 2375	70 1778

TMX 25 Standard

Same as TMX 15S-20 listed above

Hi-Lo

Same as TMX 15S-20 listed above

Triple Stage

Same as TMX 15S-20 listed above

Quad†

Same as TMX 15S-20 listed above

- Indicates preferred standard sizes. For overall height raised with load backrest, add 48 in. (1220 mm) to maximum fork height. Other uprights available, contact a CLARK representative.

** All free lift dimensions shown without standard 48 in. (1220 mm) high load backrest.

† Length to face of fork, RAS and turning radius increase 4 in. with quad installation. Wide drive (45.2" OAW) required with quad uprights taller than 222.5".

Dimensions with Optional Battery Compartment

Compartment Size

38.8 in W x 25.0 in L x 31.0 in H
986 mm W x 635 mm x 787 mm H

	TMX 15	TMX 17	TMX 20	TMX25
Length to fork face (in/mm)	80.9 2055	80.9 2055	80.9 2055	80.9 2055
Turning radius (in/mm)	64.1 1628	64.1 1628	64.1 1628	65.9 1674
Right angle aisle (in/mm)	78.5 1994	78.5 1994	78.5 1994	80.4 2042
Service wt., TSU upright (lb/kg)	8006 3631	8332 3779	8906 4040	9919 4499
Axle loading w/ load, front (lb/kg)	9601 4355	10444 4737	11263 5109	129035853
Axle loading w/ load, rear (lb/kg)	1405 637	1388 630	1643 745	2016 914
Axle loading w/o load, front (lb/kg)	4580 2077	4587 2081	4570 2073	4513 2047
Axle loading w/o load, rear (lb/kg)	3426 1554	3745 1699	4336 1967	5406 2452
Max. capacity (6 hr. rate) (kWh)	53.8	53.8	53.8	53.8
Weight, minimum (lb/kg)	2500 1134	2500 1134	2500 1134	2500 1134
Grade clearance (A%)	14.30%	14.30%	14.30%	14.30%

Battery Compartment Dimensions

Width (W) in mm	Length (L) in mm	Height (H) in mm
TMX 15S		
38.8 986	13.75 349	31.0 787
TMX 15/17/20/25		
38.8 986	20.5 521	31.0 787
38.8 986	25.0* 635	31.0 787

Battery Termination: A-18

*Optional - Increases OAL, RAS, and turning radius; see chart

Grade Clearance*

	A%
TMX 15S (13.75 BC)	35.6
TMX 15/17/20/25 (20.5 BC)	31.2
TMX 15/17/20/25 (25.22 BC)	28.6

*The TMX is designed for operation on and over grades but must be limited to 20%.

Tilt Specifications

Upright MFH(in / mm)	Tilt -B°/ F°
thru 151 (3835 mm)	8°/ 6°
152 (3860 mm) thru 240.5 (6109 mm)	5°/ 3°
241 (6121 mm) and over	3°/ 0°

*Standard tilt with MFH's noted. Contact CLARK representative for information on optional tilt.

Notes

Performance may vary +5% and -10% due to motor and systems efficiency tolerance. The performance shown represents nominal values which may be obtained under typical operating conditions of a standard machine.

ANSI/ITSDF and Insurance Classification

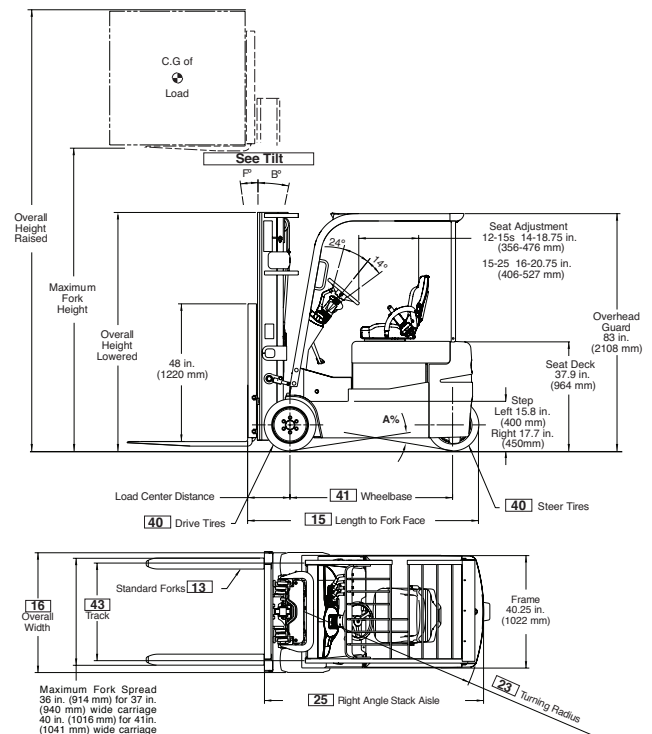
Standard truck meets all applicable mandatory requirements of Part III-ANSI/ITSDF B56.1 Safety Standard for Powered Industrial Trucks (latest edition at time of manufacture) and Underwriters Laboratories requirements as to fire and electrical shock hazard only for "E" classification. For further information contact a CLARK representative.

Users should be aware of, and adhere to, applicable codes and regulations regarding operator training, use, operation and maintenance of powered industrial trucks, including:

- ANSI/ITSDF B56.1
- NFPA 505, fire safety standard for powered industrial trucks - type designations, areas of use, maintenance and operation.
- Occupational Safety and Health Administration (OSHA) regulations that may apply.

Contact your authorized CLARK forklift truck dealer for further information including operator training programs and auxiliary visual and audible warning systems, fire extinguishers, etc., as available for specific user applications and requirements.

Specifications, equipment, technical data, photos and illustrations are based on information at time of printing and are subject to change without notice. Some products may be shown with optional equipment.



For corresponding data see Specification Chart

STANDARD SPECIFICATIONS TMX 15S/15

General Information	1	Manufacturer			CLARK	CLARK
	2	Model	Manufacturer's Designation		TMX15S	TMX15
	3	Load Capacity	lbs(kg)		3000 (1500)	3000 (1500)
	4	Load Center	Fork Face to Load CG	in(mm)	24 (500)	24 (500)
	5	Power Unit	Electric		36 volt / 48 volt	36 volt / 48 volt
	6	Operator Type			Rider Counterbalanced	Rider Counterbalanced
	7	Tire Type	Multi-tire		Cushion / Pneumatic	Cushion / Pneumatic
	8	Wheels (x=driven)	Front/Rear		2X / 1	2X / 1
Basic Dimensions ³	9	Upright ¹	Maximum Lift Height, Full Capacity	in(mm)	156 (3971)	156 (3971)
	10		Lift Height (Preferred Upright)	in(mm)	188 (4781)	188 (4781)
	11		Freelift	in(mm)	59 (1499)	59 (1499)
	12	Upright Tilt	Back/Forward (Triple Stage Upright)	degrees	5 / 3	5 / 3
	13	Fork	Std. Fork Size (T x W x L)	in(mm)	1.4 x 4 x 42 (35 x 100 x 1067)	1.4 x 4 x 42 (35 x 100 x 1067)
	14	Carriage	Width of Carriage ⁵	in(mm)	37 (940)	37 (940)
	15	Overall Dimensions	Length to Fork Face (TSU) ²	in(mm)	69.5 (1765)	76.1 (1933)
	16		Width Over Tires ⁴	in(mm)	40.3 (1024) / 42.2 (1072)	40.3 (1024) / 42.2 (1072)
	17		Width Over Frame	in(mm)	40.3 (1024)	40.3 (1024)
	18		Height, Upright Lowered	in(mm)	83 (2108)	83 (2108)
	19		Height, Upright Extended	in(mm)	236 (5994)	236 (5994)
	20		Height, Overhead Guard	in(mm)	83 (2108)	83 (2108)
	21	Step Height	Ground to Top of Step	in(mm)	15.8 (401) / 19 (483)	15.8 (401) / 19 (483)
	22					
	23	Turning Radius		in(mm)	53.4 (1356)	59.8 (1519)
	24	Load Center Distance	Center of Drive Axle to Fork Face ²	in(mm)	14.4 (366)	14.4 (366)
Performance	25	Right Angle Stack Aisle	Add Load Length and Clearance ²	in(mm)	67.8 (1722)	74.2 (1885)
	26	Battery Roller Height	Ground to Top of Rollers	in(mm)	7.1 (180.8)	7.1 (180.8)
	27	Stability	According to ANSI		Yes	Yes
	28	Speeds	Travel Speed, Max, With Load	mph(kph)	9.3 (15)	9.3 (15)
	29		Travel Speed, Max, Without Load	mph(kph)	9.3 (15)	9.3 (15)
	30	Lift Speeds, Loaded	Triple Stage Upright	fpm(mps)	69 (.35) / 81 (.41)	69 (.35) / 81 (.41)
	31	Lift Speeds, Unloaded	Triple Stage Upright	fpm(mps)	104 (.53) / 118 (.60)	104 (.53) / 118 (.60)
Weights ²	32	Lower Speeds, Loaded	Triple Stage Upright	fpm(mps)	86 (.44) / 86 (.44)	86 (.44) / 86 (.44)
	33	Lower Speeds, Unloaded	Triple Stage Upright	fpm(mps)	77 (.39) / 77 (.39)	77 (.39) / 77 (.39)
	34	Service Weight, TSU	W/Min Battery Weight	lbs(kg)	7908 (3588)	7921 (3593)
	35	Axle loading	With Load, Front	lbs(kg)	9594 (4467)	9796 (4561)
	36		With Load, Rear	lbs(kg)	1314 (620)	1125 (532)
Chassis	37		W/O Load, Front	lbs(kg)	4090 (1855)	4610 (2091)
	38		W/O Load, Rear	lbs(kg)	3818 (1732)	3311 (1502)
	39	Tires	Number, Front/Rear		2 / 1	2 / 1
	40		Size, Front	in	18X7X12.12 / 18X7-8 16PR6	18X7X12.12 / 18X7-8 16PR6
			Size, Rear	in(mm)	18X7X12.12 / 5.00x8-4.505,6	18X7X12.12 / 18X7-8 16PR6
	41	Wheelbase		in(mm)	46.0 (1168)	52.7 (1339)
	42	Track	Front, Cushion	in(mm)	33.3 (846)	33.3 (846)
	43		Front, Pneumatic	in(mm)	33.9 (861)	33.9 (861)
	44	Ground Clearance	Min w/Load ⁶	in(mm)	3.25 (83)	3.25 (83)
	45		At Center of Wheelbase, Loaded	in(mm)	4.1 (104)	4.1 (104)
Drive Line	46	Service Brake	Type		Disc	Disc
	47	Parking Brake	Type		Hand lever actuated	Hand lever actuated
		Steering	Type		Hydrostatic	Hydrostatic
	48	Battery	Type		Lead-Acid	Lead-Acid
			Max Capacity (6 hr. Rate)	kWh	27.0	43.0
			Weight, Min	lbs(kg)	1650 (749)	2590 (1176)
	49	Motors, Controls	Drive Motor, Diameter (Dual)	in(mm)	7.9 (201)	7.9 (201)
			Hydraulic Motor, Diameter	in(mm)	6.7 (170)	6.7 (170)
			Drive Motor Control		Inverter	Inverter
			Speed Control		Solid State	Solid State
			Hydraulic Motor Control		Inverter	Inverter
	57	Hydraulic Pressure			Adjustable	Adjustable
	58	Sound Level	Avg. at Operator's Ear Per ANSI B56.11.5	dB(A)	70	70

Notes: 1 See upright table for other available uprights.
2 Dimensions are for TSU uprights: add the following (with 1.5in. thick forks) for other uprights: 3.14 for Quad, 0.1in. for STD and 2.37in. for HiLo uprights.
3 Specifications are given with preferred triple stage upright and minimum battery weight.

STANDARD SPECIFICATIONS TMX 17/20/25

1	Manufacturer	CLARK	CLARK	CLARK
2	Model	TMX17	TMX20	TMX25
3	Load Capacity	3500 (1750)	4000 (1815)	5000 (2270)
4	Load Center	24 (500)	24 (500)	24 (500)
5	Power Unit	36 volt / 48 volt	36 volt / 48 volt	36 volt / 48 volt
6	Operator Type	Rider Counterbalanced	Rider Counterbalanced	Rider Counterbalanced
7	Tire Type	Cushion / Pneumatic	Cushion / Pneumatic	Cushion
8	Wheels (x=driven)	2x / 1	2x / 1	2x / 1
9	Upright ¹	156 (3971)	171 (4346)	171 (4346)
10		188 (4781)	188 (4781)	188 (4781)
11		59 (1499)	59 (1499)	59 (1499)
12	Upright Tilt	5 / 3	5 / 3	5 / 3
13	Fork	1.4 x 4 x 42 (35 x 100 x 1067)	1.5 x 4 x 42 (40 x 100 x 1067)	1.5 x 4 x 42 (40 x 100 x 1067)
14	Carriage	37 (940)	37 (940)	41 (1041)
15	Overall Dimensions	76.1 (1933)	76.1 (1933)	76.1 (1933)
16		40.3 (1024) / 47.2 (1199)	40.3 (1024) / 47.2 (1199)	42.2 (1072)
17		40.3 (1024)	40.3 (1024)	40.3 (1024)
18		83 (2108)	83 (2108)	83 (2108)
19		236 (5994)	236 (5994)	236 (5994)
20		83 (2108)	83 (2108)	83 (2108)
21	Step Height	15.8 (401) / 19 (483)	15.8 (401) / 19 (483)	15.8 (401) / 19 (483)
22				
23	Turning Radius	59.8 (1519)	59.8 (1519)	61.9 (1565)
24	Load Center Distance	14.4 (366)	14.4 (366)	14.4 (366)
25	Right Angle Stack Aisle	74.2 (1885)	74.2 (1885)	76.1 (1933)
26	Battery Roller Height	7.1 (180.8)	7.1 (180.8)	7.1 (180.8)
27	Stability	Yes	Yes	Yes
28	Speeds	9.3 (15)	9.3 (15)	7.5 (12)
29		9.3 (15)	9.3 (15)	7.5 (12)
30	Lift Speeds, Loaded	65 (.33) / 75 (.38)	61 (.31) / 74 (.38)	45 (.23) / 53 (.27)
31	Lift Speeds, Unloaded	104 (.53) / 118 (.60)	104 (.53) / 118 (.60)	89 (.45) / 95 (.48)
32	Lower Speeds, Loaded	86 (.44) / 86 (.44)	86 (.44) / 86 (.44)	86 (.44) / 86 (.44)
33	Lower Speeds, Unloaded	77 (.39) / 77 (.39)	77 (.39) / 77 (.39)	77 (.39) / 77 (.39)
34	Service Weight, TSU	8305 (3767)	8964 (4066)	10093 (4578)
35	Axle loading	10819 (4997)	11692 (5405)	13401 (6206)
36		986 (521)	1272 (661)	1692 (872)
37		4769 (2163)	4777 (2167)	4758 (2158)
38		3536 (1604)	4187 (1899)	5335 (2420)
39	Tires	2 / 1	2 / 1	2 / 1
40		18X8X12.12 / 18X9-8 16PR6	18X8X12.12 / 18X9-8 16PR6	18X9X12.12
		18X7X12.12 / 15X4.5-8 dual5	18X7X12.12 / 15X4.5-8 dual5	18X6X12.12 10
41	Wheelbase	52.7 (1339)	52.7 (1339)	52.7 (1339)
42	Track	32.3 (820)	32.3 (820)	33.3 (846)
43		33.6 (853)	33.6 (853)	NA
44	Ground Clearance	3.25 (83)	3.25 (83)	3.25 (83)
45		4.1 (104)	4.1 (104)	4.1 (104)
46	Service Brake	Disc	Disc	Disc
47	Parking Brake	Hand lever actuated	Hand lever actuated	Hand lever actuated
	Steering	Hydrostatic	Hydrostatic	Hydrostatic
48	Battery	Lead-Acid	Lead-Acid	Lead-Acid
		43.0	43.0	43.0
		2590 (1176)	2590 (1176)	2500 (1134)
49	Motors, Controls	7.9 (201)	7.9 (201)	7.9 (201)
		6.7 (170)	6.7 (170)	6.7 (170)
		Inverter	Inverter	Inverter
		Solid State	Solid State	Solid State
		Inverter	Inverter	Inverter
57	Hydraulic Pressure	Adjustable	Adjustable	Adjustable
58	Sound Level	70	70	70

4 OAW with wide drive tires is 45in. for all models with all quad uprights and with triple stage uprights above 240in.

5 36in. max fork spread w/37in. carriage. 40in. max fork spread w/41in. carriage.

6 Ground Clearance at rear frame tie-down points is approximately 1.5in.



OVER 100 YEARS OF MATERIAL HANDLING INNOVATION

A Centennial is an important milestone which not only celebrates longevity, but testifies to the strength of the CLARK brand across generations. This is reflected in the more than one million lift trucks manufactured by CLARK Material Handling Company over the past 100 years. Even more powerful than the number of trucks built is the company's legacy of innovation. It began in 1917 when employees of CLARK Equipment Company constructed a simple three-wheeled shop buggy to haul sand and castings between buildings at their Buchanan, Michigan plant. The "Trutractor" as the shop buggy was named,



became the first internal combustion material handling truck and was a great success. The industrial truck was born and in the process CLARK developed the first hydraulic lift. Through the years, many extraordinary inventions followed, among them the nested I-beam upright, overhead guard and operator restraint system. The founding principles of Eugene B. Clark—are still true: "Aim always to build the best; never be content with just as good." Today the company remains focused on a bright future and the technologies and trends driving the material handling industry around the world. One Purpose, One Brand, One Legacy, One Century.



Montacargas del Valle de México

 55 5583 0055

 Lada sin costo 800-00-MONTA

 ventas@montacargas.com.mx

 Massenet No 206, Col. Peralvillo, CDMX, CP: 06220

www.montacargas.com.mx



CLARK MATERIAL HANDLING COMPANY
North American Headquarters
700 Enterprise Drive • Lexington, KY 40510
866-252-5275 • www.CLARKmhc.com

TMX 15S/15/17/20/25
59-894-0846 Printed in USA OTP04182.5M
© 2018 CLARK Material Handling Company